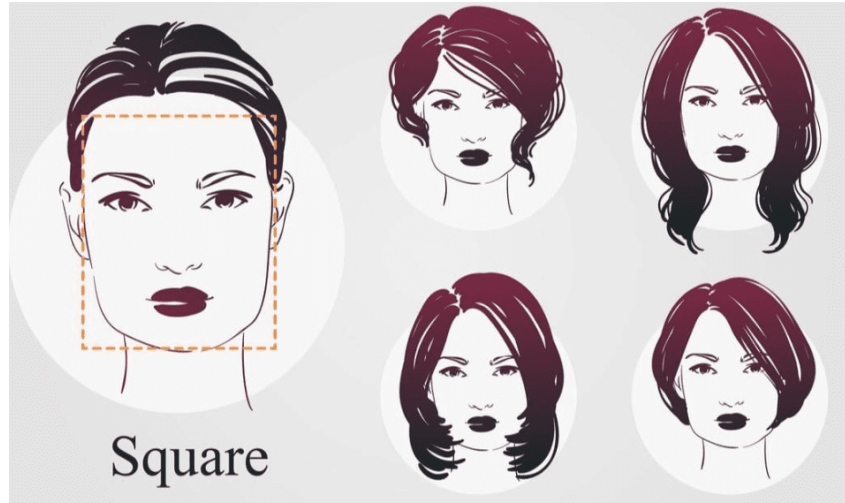


Top 5 Haircuts to Try if You Have a Square Face Shape

Published on 27 Dec 2025 | By IFI Correspondent



If you have a **square face shape** — defined by a strong jawline and balanced forehead, cheekbones, and chin — the right haircut can **soften angles, add movement, and highlight your best features**. Stylists say the key is to create shape and texture that balance your facial proportions rather than accentuating the jawline. Here are some of the *most flattering and stylish haircuts to try* in 2025–26.

1. Layered Bob or Textured Bob

A **layered bob** offers versatile charm for square faces. With layers that add movement and dimension, this haircut softens the jawline and frames the face beautifully. A **textured bob** — with choppy ends or subtle waves — brings modern flair while keeping the look effortless.

Styling tip: Pair with a soft side part or tousled waves for a casual yet chic finish.

2. Long Layers with Soft Waves

For medium to long hair, **long layers with soft waves** are ideal. The cascading layers help draw the eye downward and add texture, creating a softer, more feminine silhouette. Loose waves also introduce movement that contrasts nicely with sharper facial angles.

Styling tip: Use a large barrel curling wand for gentle, natural-looking waves.

3. Side-Swept Bangs or Curtain Bangs

Side-swept bangs and **curtain bangs** are two of the most popular choices for square faces. These fringe styles break up strong facial lines and help balance your features. Curtain bangs, softly parted around the cheekbones, are especially flattering and versatile across hair lengths.

Styling tip: Try a relaxed blow-out to keep bangs soft and effortless.

4. Angled or Asymmetrical Cuts

Angled bobs or **asymmetrical cuts** — where one side is slightly longer than the other — create visual interest and soften the boxy silhouette of a square face. These cuts naturally elongate the face and draw attention away from prominent jawlines.

Styling tip: Keep ends sleek or wavy to complement both formal and casual looks.

5. Pixie or Bixie Cut

Short hair can be stunning on a square face when styled right. **Textured pixie cuts** with wispy layers add volume and balance, while the **bixie** — a hybrid between a bob and pixie popular with trendsetters — brings a confident, edgy vibe.

Styling tip: Add soft, face-framing layers or side bangs to avoid overly sharp edges.

For more style updates & exclusive fashion stories follow indiafashionicon.com

DISCLAIMER: THE VIEWS/CONTENTS EXPRESSED/PRESENTED HEREIN, WITHIN THIS ADVERTORIAL AND PROMOTIONAL FEATURE ARE THE SOLE AND EXCLUSIVE RESPONSIBILITY OF INDIVIDUAL CLIENTS/EXPERT/THEIR AUTHORISED REPRESENTATIVE/PUBLISHER, TO WHICH EFFECT, PUBLICATION HOUSE/ITS REPRESENTATIVES/AFFILIATES ARE NOT RESPONSIBLE/LIABLE WHATSOEVER.